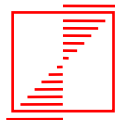


PRINCIPIA



ISYMOST

Interactive SYstem for MOdelling of STructures

Installation Procedure

Version 5.05

June 2011

For support and hot-line, please contact:

Marie Christine ROUAULT
PRINCIPIA

Tel.: +33 4 42 98 16 30

Fax: +33 4 42 98 11 89

e-mail: nso-isymost@principia.fr

Web site: <http://www.principia.fr/>

SUMMARY

1. INSTALLATION PROCEDURE	1
1.1 Download files	1
1.2 Installation on a single computer	1
1.3 Installation on a network	3
1.3.1 Software installation on the server system	3
1.3.2 Installation on a client system	5
1.4 License manager installation	5
1.4.1 Network Licenses	6
1.4.1.1 <i>Flexlm Installation for network licenses</i>	6
1.4.1.2 <i>Hardware Key (dongle) Licensing</i>	6
1.4.1.3 <i>Installing the License file(s)</i>	6
1.4.1.4 <i>License manager setup</i>	7
1.4.2 Nodelocked Licenses	9
1.4.2.1 <i>Installing the License file(s)</i>	9

1. INSTALLATION PROCEDURE

1.1 Download files

Isymost_505.zip: Zip with setup files

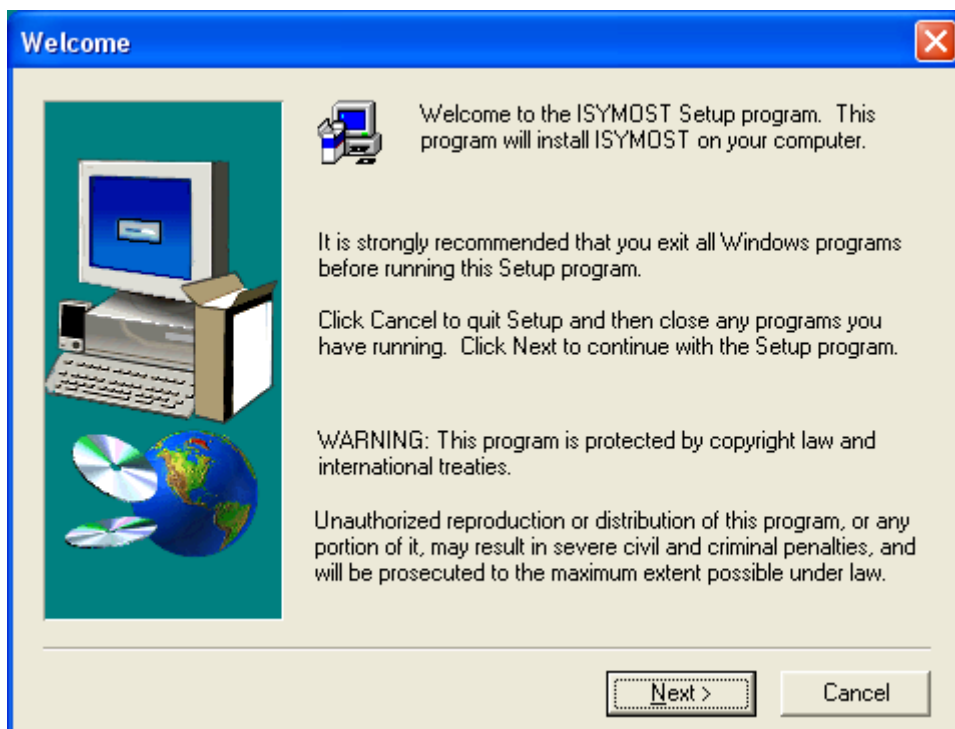
Flexlm.zip: Zip with daemon (unzip in C:\OCEANOS)

1.2 Installation on a single computer

To install the software on a single computer, run SETUP.EXE with **administrator privileges** from the ISYMOST CD or installation directory and follow the instructions.

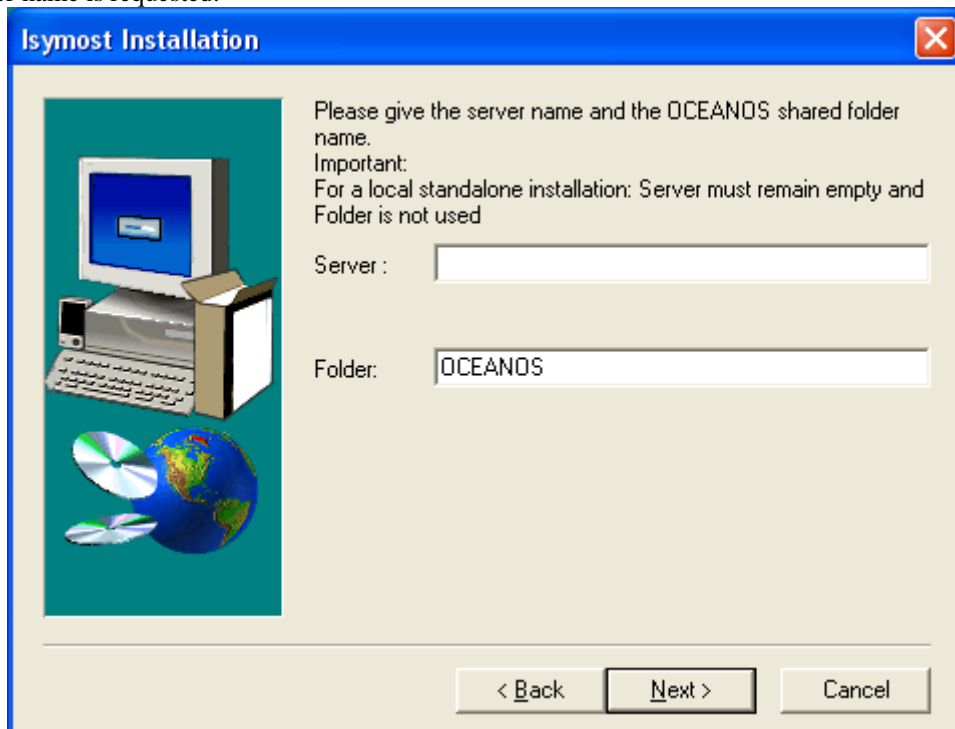
If another ISYMOST version is already installed, the following steps remain necessary, the procedure will use the existing directories.

The installation procedure will prompt for additional data with the following Control Panels:



A different folder can be selected with the Browse button. The default folder is nevertheless recommended.

Then the Server name is requested:



Note that Server must remain empty for or an installation on a single computer.

By default the installation root directory (the OCEANOS folder) is C:\OCEANOS, and during the installation an additional subdirectory ISYMOST is created if necessary, with the version subdirectory: Vx.y.

Two initialisation files are created or updated:

- OCEANOS.INI in the OCEANOS folder
- OCEANOS_USER.INI in the “USERPROFILE” folder (C:\Documents and Settings\user_name on XP versions and C:\Users\user_name on Vista or Seven version)

A shortcut named “Run ISYMOST x.y” is also created in the Desktop.

Then the license files can be installed, following the procedure paragraph 1.4.

1.3 Installation on a network

To install ISYMOST on a network, 3 steps must be performed:

- ✓ Installation of the software on a server
- ✓ Installation and setup of the licence manager
- ✓ Installation on the user's computer

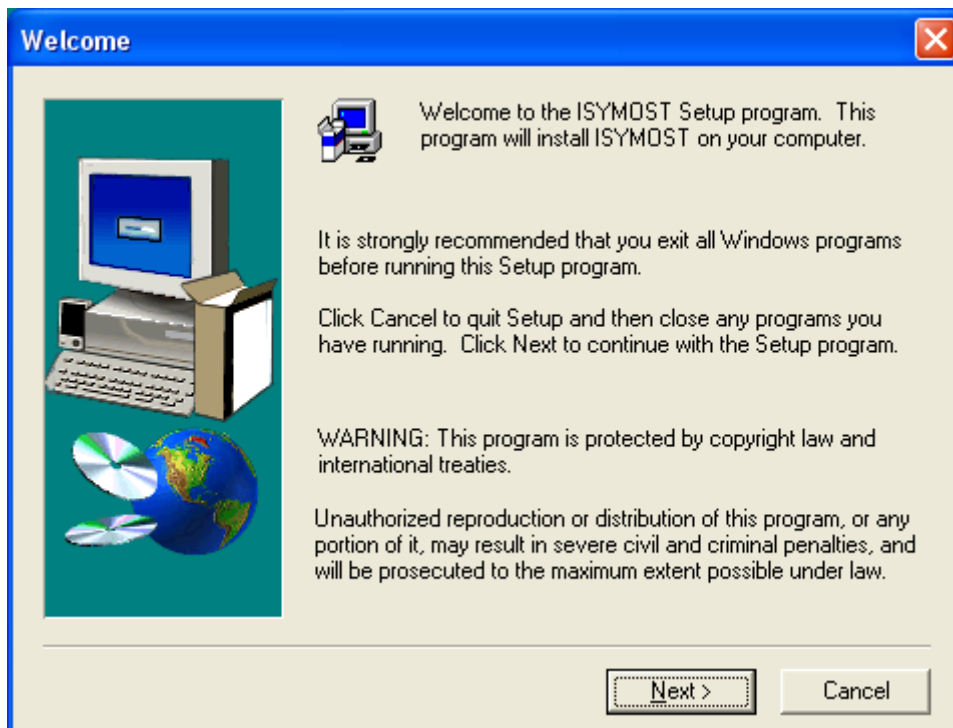
1.3.1 Software installation on the server system

A folder must be created on the server and shared in read mode. The folder's share name can be OCEANOS, which is the default for the installation procedure.

Then the procedure on the server is similar to the procedure on a single computer.

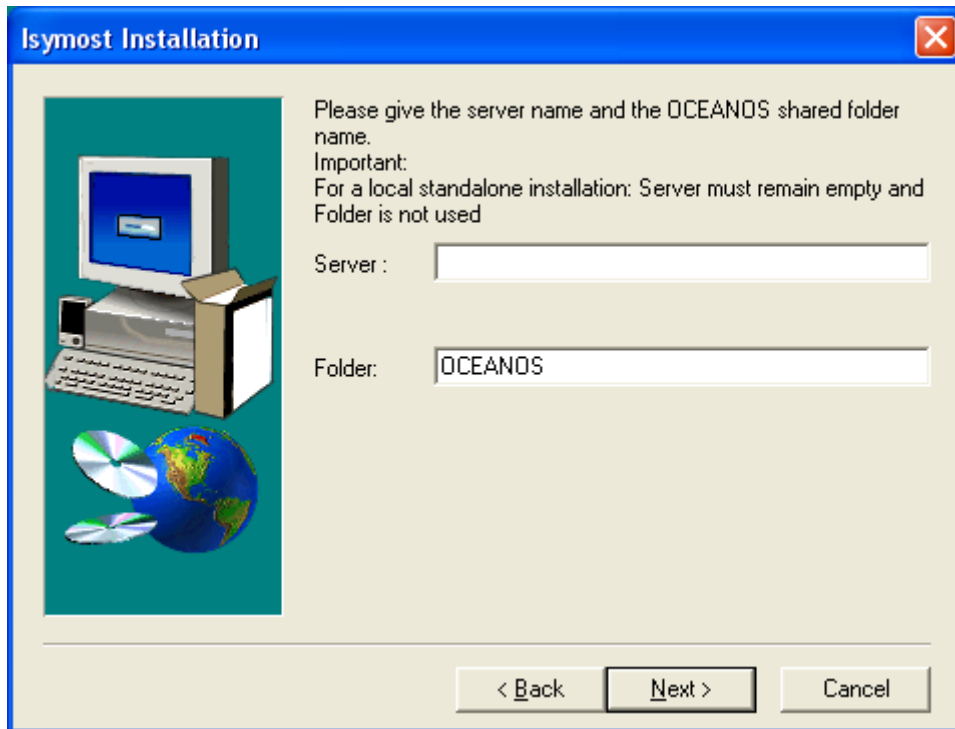
Run SETUP.EXE from the ISYMOST CD or installation directory and follow the instructions.

The installation procedure will prompt for additional data with the following Control Panels:

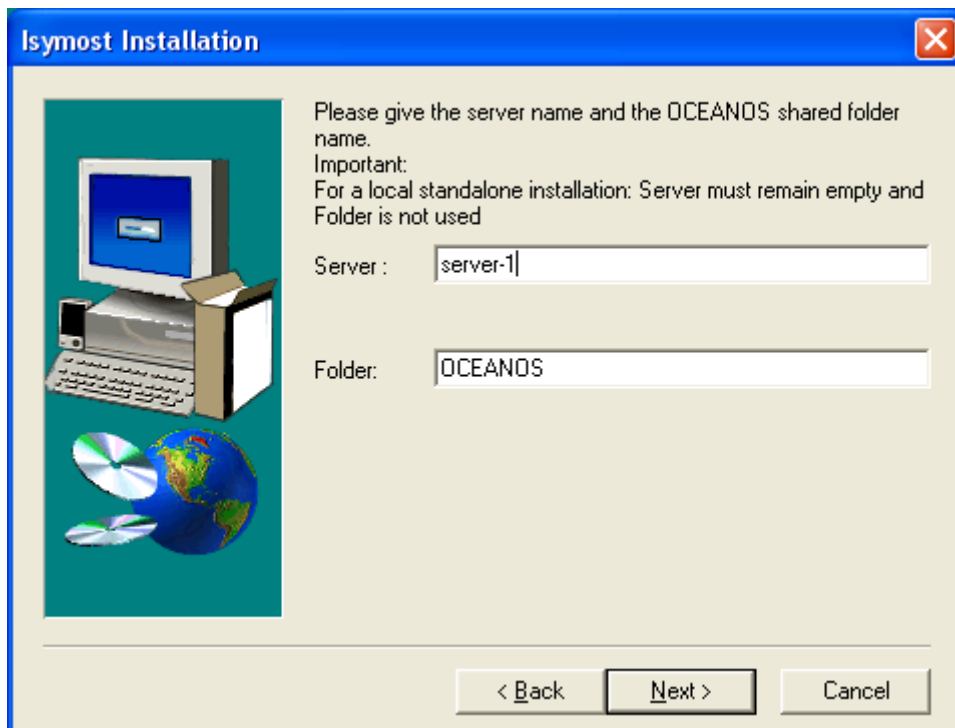


A different folder can be selected with the Browse button. The default folder is nevertheless recommended.

Then the Server name is requested:



A server name must be provided, as well as the shared folder name previously created:



The Socket value will be used for FLEXIm. See the following paragraph for additional information.

During the installation the additional subdirectory ISYMOST is created if necessary, with the version directory Vx.y. Two initialisation files are created:

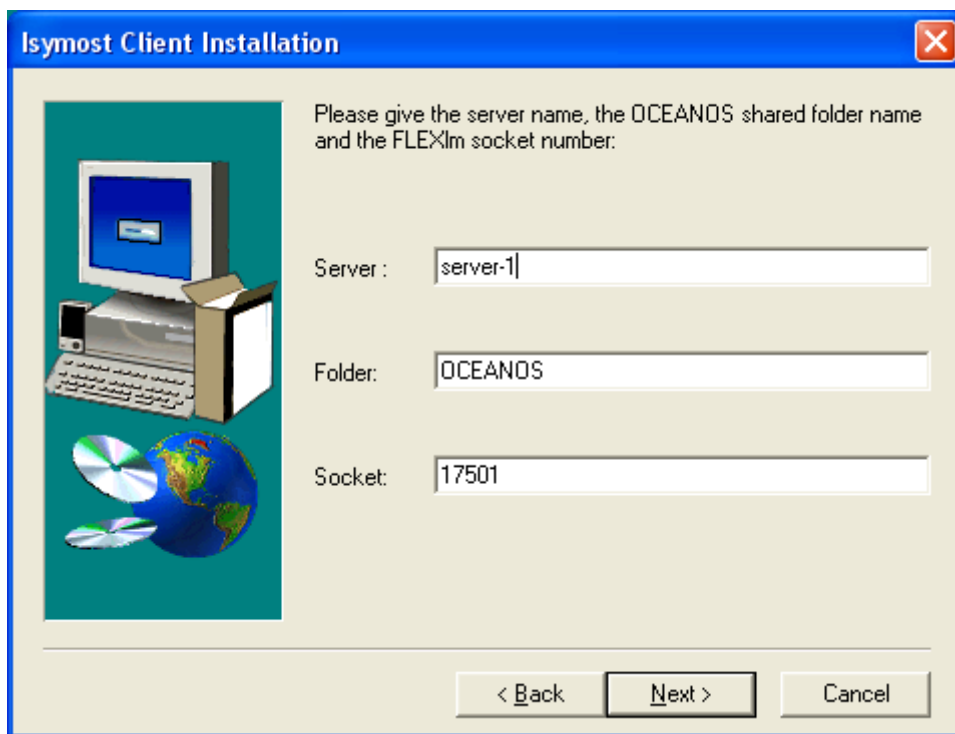
- OCEANOS.INI un the OCEANOS folder
- OCEANOS_USER.INI in the “USERPROFILE” folder (C:\Documents and Settings*user_name* on XP versions and C:\Users*user_name* on Vista or Seven version)

The OCEANOS_USER.INI file can be used for testing purpose on the server, as well as the shortcuts named “Run ISYMOST x.y” created in Desktop and in the Start Programs menu.

Then the license server can be setup, following the procedure paragraph 1.4.

1.3.2 Installation on a client system

To install ISYMOST, run the program SETUP.EXE contained in the directory ISYMOST_CLIENT. This directory is contained in the shared directory OCEANOS\ISYMOST\Vx.y of the server (x.y is the ISYMOST version number). Enter the server name and the shared folder name (OCEANOS by default).



The shortcuts named “Run ISYMOST x.y” are created in Desktop and in the Start Programs menu. An initialization file OCEANOS_USER.INI is created or updated in the user’s directory: C:\Documents and Settings*user_name* on XP versions and C:\Users*user_name* on Vista or Seven version.

1.4 License manager installation

For most OCEANOS software, FLEXLM is the License Management Software of choice. The license manager uses the Ethernet MAC address, or a hardware key (dongle) provided with the installation CD and to be installed on the parallel port of the server.

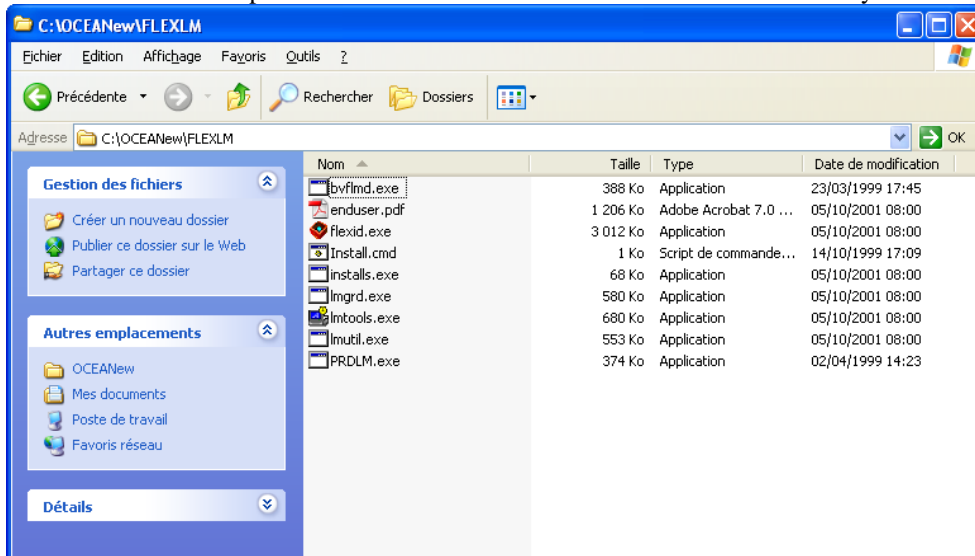
1.4.1 Network Licenses

If there are no “SERVER” line in the distributed license files, you have a nodelock license setup and you can go to the next section.

The basic principle of network licenses is that the licenses are declared on a centrally available machine which will operate as “License Server”, to distribute “License Tokens” to client machines on the network executing some or all OCEANOS software. The license token is “given” to an instance of the licensed software on a client machine for the duration of the (concurrent) execution.

1.4.1.1 *Flexlm Installation for network licenses*

The above installation procedure creates on the SERVER the FLEXLM directory containing the following files:



1.4.1.2 *Hardware Key (dongle) Licensing*

In case of Hardware Key provided or installed on the machine, you will need to activate the hardware key drivers such that they are properly recognized. To achieve this, you should execute (double click) on the “flexid.exe” file in the FLEXLM folder. This action will install the hardware key drivers.

1.4.1.3 *Installing the License file(s)*

You should have received a number of license related files, either via e-mail or on a floppy disk. The distributed files are identified in the following table:

Software	License file name	Auxiliary file(s) name(s)
ISYMOST	Isy- <i>uniqueID</i> .lic	N/A

Where “*uniqueID*” is some identifier describing uniquely your organization and the sublicense thereof.

Generally, you will need to

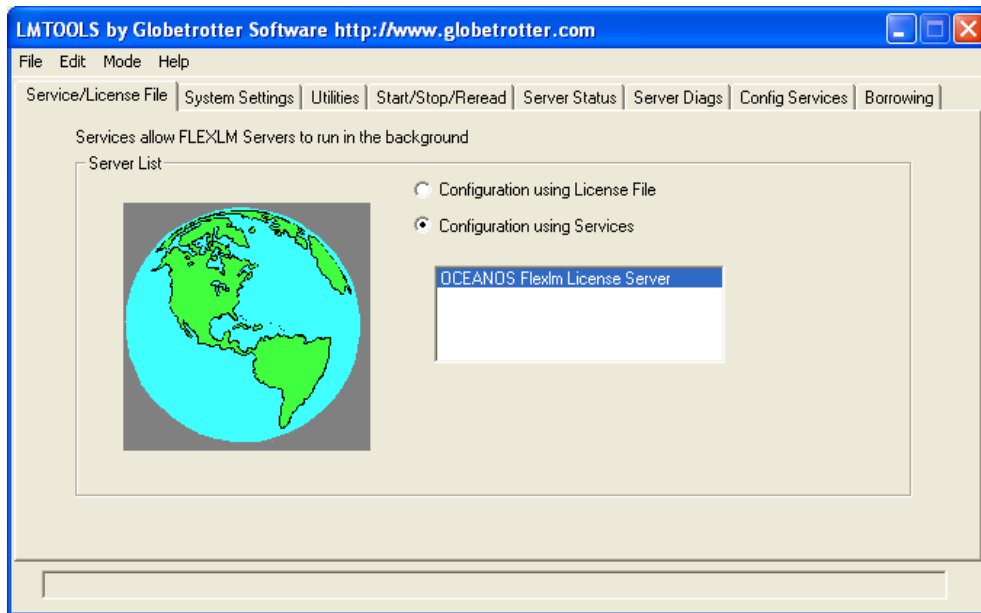
- 1) Create a text file named “license.dat” using Notepad.
- 2) Copy to “license.dat” all DAEMON, FEATURE and INCREMENT lines from the software.lic files. Please note that some FEATURE or INCREMENT logical lines are actually on two physical lines, in which case both physical lines should be copied exactly as displayed in the software.lic files.
- 3) Remove duplicate DAEMON lines
- 4) Keep one SERVER line at the top of the “license.dat” file, if such a line is present in some or all distributed software.lic files.
- 5) Modify the server name (2nd) field in the SERVER line to match the current machine network name, if required
- 6) Modify the server port (4th) field in the SERVER line if required (advanced users).
- 7) Copy the files “license.dat” and “into the FLEXLM folder.

Note: When you directly receive the file “license.dat” some of the above steps 1 to 6 may be omitted, but the SERVER name and port should be checked.

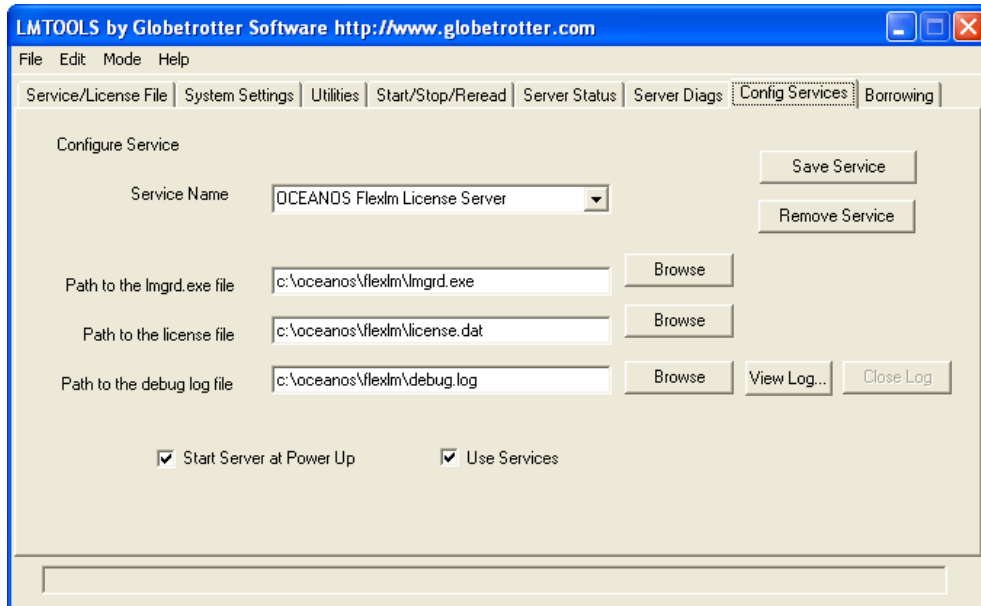
1.4.1.4 License manager setup

Once the file LICENSE.DAT is installed on the directory C:\OCEANOS\FLEXLM you must install the License server itself. For this:

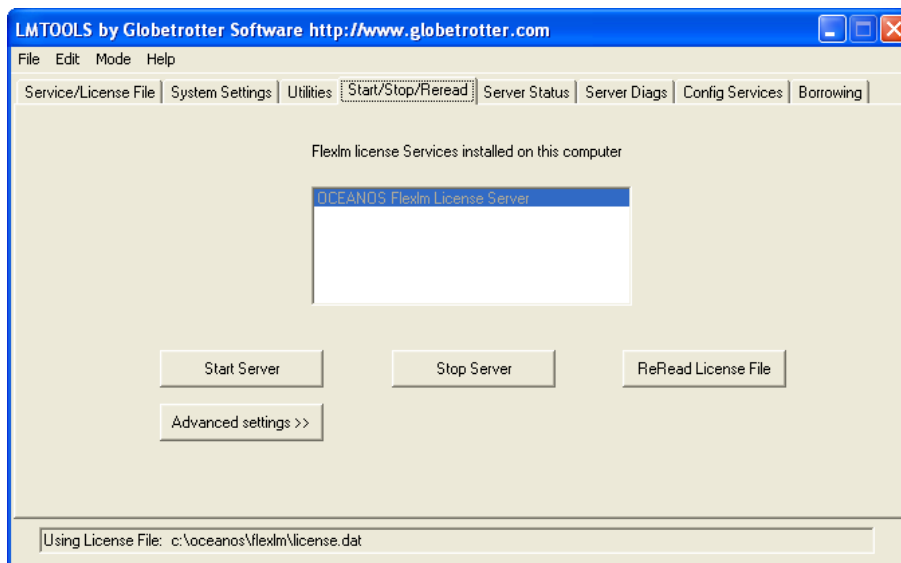
1. Execute the file INSTALL.CMD in the directory C:\OCEANOS\FLEXLM
2. Run the LMTOLS.EXE program. The following window should appear:



3. Select Config Services. The following window should appear:

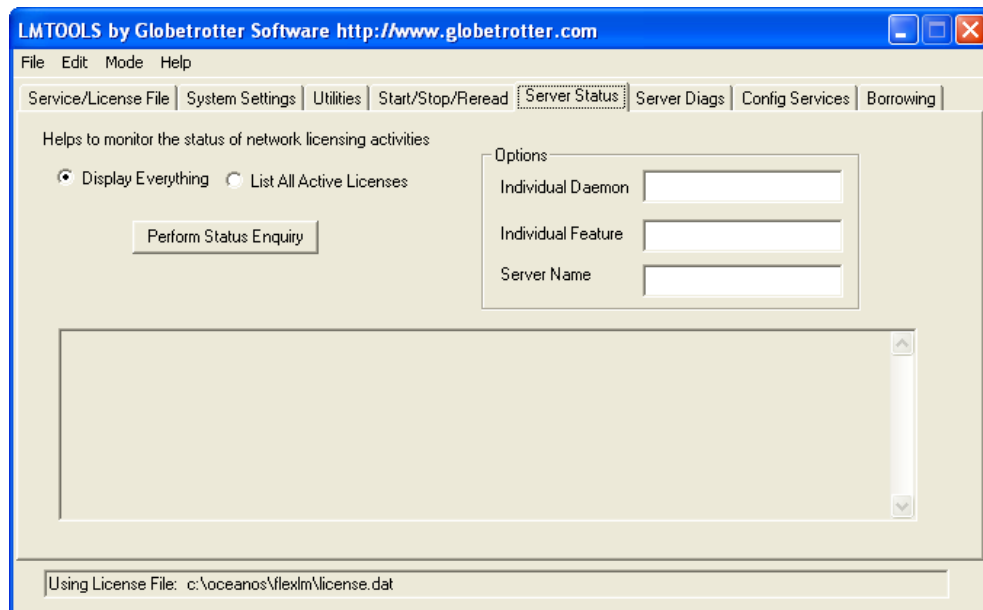


4. Select Start/Stop/Reread to get the following window:



Then click on Start Server.

5. The license server is now running. Check it by selecting Server Status and Perform Status Enquiry.



The Server installation is then completed..

1.4.2 Nodelocked Licenses

1.4.2.1 *Installing the License file(s)*

You should have received a number of license related files, either via e-mail or on a floppy disk. The distributed files are identified in the following table:

Software	License file name	Auxiliary file(s) name(s)
ISYMOST	Isy- <i>uniqueID</i> .lic	N/A

Where "*uniqueID*" is some identifier describing uniquely your organization and the sublicense thereof.

Generally, you will need to

- 1) Create a text file named "license.dat" using Notepad.
- 2) Copy to "license.dat" all FEATURE and INCREMENT lines from the software.lic files. Please note that some FEATURE or INCREMENT logical lines are actually on two physical lines, in which case both physical lines should be copied exactly as displayed in the software.lic files.
- 3) Copy the file "license.dat" into the C:\OCEANOS\FLEXLM folder.

Note: When you directly receive the file "license.dat" steps 1 and 2 are meaningless.

For nodelocked licenses, that is for software being used solely on the current machine, this should complete the licensing installation tasks.